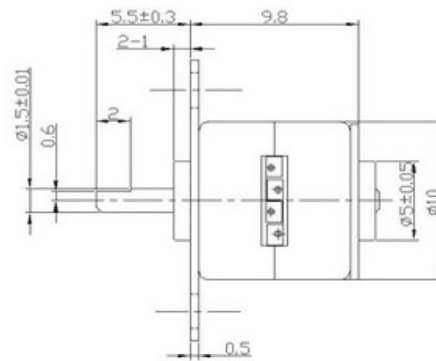
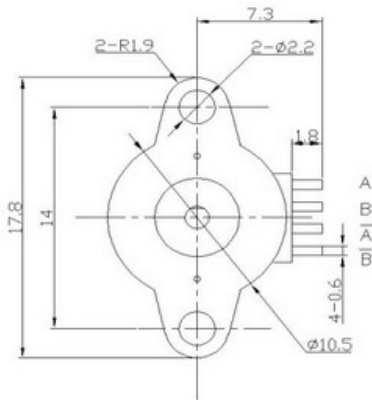


### S10PM: dc stepper motor



#### Description

- 1.Size: 10\*9.8mm
- 2.Voltage: 5V
- 3.Step angle: 18°
- 4.Phase: 2-2
- 5.Specs can be customized for you



UNIT:Millimeter

WEIGHT: g(APPROX)

Voltage V	Step Angle		Max Frequency			Torque	
	degree	Phase	Starting/pps	Response/pps	Resistance/Ω	Pull-in/g.cm	Pull-out /g.cm
5	18°	2-2	1300	2800	15	3	12

TEL:+86-755-89480927

FAX:+86-755-88366423

Web: [www.sonth123.com](http://www.sonth123.com)

Msn: [sonth123@hotmail.com](mailto:sonth123@hotmail.com)