

SONTH

武汉尚斯机电有限公司

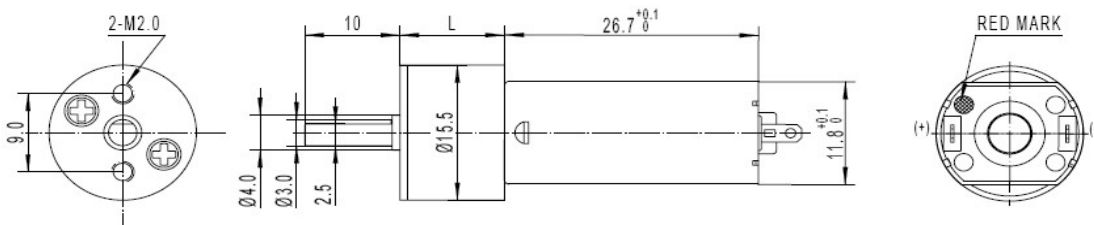
Sonth (HK) Industrial Co.,Ltd

SG16-050: dc spur gear motor



Description

- 1.Diameter: 16mm
- 2.Voltage: 5V (1.5~24V)
- 3.Input speed: 11000rpm (6000~25000rpm)
- 4.Reduction ratio: 1/20,1/86,1/115,1/250,1/360....
- 5.Output speed: 5~500rpm
- 6.Rated torque: 0.2~2Kg.cm
- 7.Can match encoder
- 8.Specs can be customized for you



Reduction Ratio	Gearbox Length L= mm	Voltage 5V, Input 11000rpm (1.5V, 3V, 4.5V, 5V, 6V, 9V, 12V, 24V)						
		No load Speed/rpm	At load			Stall		
			Speed/rpm	Current/A	Torque/Kg.cm	Power/W	Current/A	Torque/Kg.cm
1/3	17.3	3666	2933	0.26	0.2	0.8	0.9	0.5
1/10	17.3	2200	1760	0.26	0.2	0.8	0.9	0.5
1/20	17.3	550	440	0.26	0.2	0.8	0.9	0.5
1/35	17.3	315	250	0.26	0.3	0.8	0.9	0.6
1/63	17.3	175	140	0.26	0.3	0.8	0.9	0.6
1/86	17.3	128	102	0.26	0.4	0.8	0.9	1.0
1/115	17.3	96	76	0.26	0.4	0.8	0.9	1.0
1/150	17.3	73	58	0.26	1.5	0.8	0.9	2.0
1/250	17.3	44	35	0.26	1.5	0.8	0.9	3.0
1/360	17.3	30	24	0.26	2.0	0.8	0.9	4.0

Tel: +86-27-87153161

Fax: +86-27-51893787

Address: 26th Floor, Block A, LongAn GangHui City,
MinZu Road, Optical Vally, WuHan, HuBei, China

Email: cassy@sonth-industrial.com

Web: www.sonth-industrial.com ; www.sonth123.com